

xiaomi

Electric Shaver S700 User Manual



Safety Instructions

Warnings

1. This appliance is not intended for use by persons (including children) with reduced physical, sensory or mental capabilities, or lack of experience and knowledge, unless they have been given supervision or instruction concerning use of the appliance by a person responsible for their safety.
2. Cleaning and user maintenance shall not be made by children without supervision.
3. Children should be supervised to ensure that they do not play with the appliance.
4. The appliance is only to be used with the power supply unit provided with the appliance.
5. Detach the hand-held part from the supply cord before cleaning it in water.
6. If the charging dock is damaged, it must be replaced by the manufacturer, its service agent or similarly qualified persons in order to avoid a hazard.
7. The shaver's shaving head is fragile. If the shaver accidentally drops, check whether its shaving head is damaged and whether the sound it makes is normal before use. After each use, make sure to install the protective cover.
8. Do not charge this shaver in humid environments.
9. Do not charge this shaver for extended periods of time while leaving it unattended, and do not charge it longer than 24 hours.
10. Do not disassemble the body to replace the battery.
11. Always hold the plug when plugging in or unplugging the charging cable. Never directly pull the cable.
12. This appliance contains built-in lithium-ion battery. Do not disassemble, impact, crush the battery or throw it into fire. If there is severe swelling, do not continue to use. Do not leave the battery in high temperature environment.
13. Do not place or insert any foreign objects into this shaver.
14. Do not modify or repair this shaver yourself.
15. Battery is not replaceable.
16. The appliance is not suitable for use in a bath or shower.
17. For the purposes of recharging the battery, only use the detachable supply unit provided with this appliance.



suitable for cleaning under an open water tap



not suitable for cleaning under an open water tap

Precautions

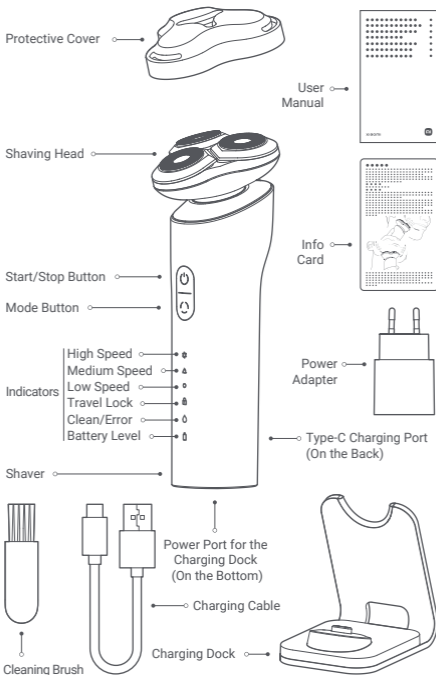
1. Keep this shaver out of reach of children.
2. Before charging, make sure that the shaver and its charging dock, especially the charging ports, are dry.
3. The appliance is only to be used with the power supply unit provided with the appliance.
4. Fully charge the shaver at least once every six months, if it will not be used for an extended period of time.

Notes

1. This shaver is intended for indoor use only.
2. This shaver is intended for use by a single individual only.
3. When traveling, make sure to install the protective cover and enable the travel lock to protect the shaver.
4. It is recommended to charge, use, and store this shaver at temperatures between 5°C to 35°C.
5. Do not wrap the charging cable around the shaver to avoid damage to the cable.
6. This shaver is only suitable for facial hair, and is not recommended to be used to shave one's head or other parts of the body.
7. This shaver meets the IPX7 standards for waterproofing and can be cleaned with water. However, it should not be immersed in water for an extended period of time.
8. It is normal for water to drip through the gaps of the body when rinsing the shaver. However, this poses no danger since all electronic components are enclosed in an independent waterproof compartment inside the shaver. Standing it upright can help get rid of the water quickly.

For detailed e-manual, please go to www.mi.com/global/service/user-guide.

Product Overview



Note: Illustrations of the product, accessories, and user interface in this user manual are for reference purposes only. The actual product and functions may vary due to product enhancements.

How to Use

1. It is normal for the skin to be slightly irritated after the first few shaves. It is recommended to regularly use the shaver (at least 3 times a week) for 3 weeks to allow the skin to adapt as quickly as possible.
2. Apply gentle pressure while shaving your face in circular motions. It is not necessary to repeatedly shave the same area to achieve a clean shave (shave dry for an optimal result).

Operating the shaver

- Press the start/stop button.

Switching mode

- When the shaver is started, press the mode button to cycle through the modes of low speed, medium speed, and high speed. Once a mode is selected, its indicator will be on.
- When the shaver is stopped, you can still press the mode button to cycle through the modes, and the indicator for the selected mode will remain on for 5 seconds and then go off. After the shaver is started, it will operate in the mode that you selected when the shaver was stopped.

Note: If the mode is not changed when the shaver is stopped, the next time the shaver is started, it is set to the mode that was used before it was stopped.



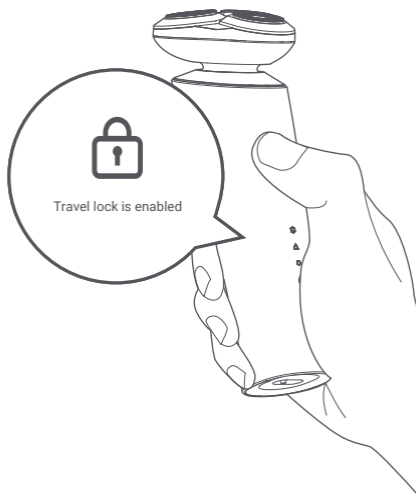
Note: Improper use of the shaver can easily cause damage to the shaving head and the blade meshes. Please check whether the shaving head and the blade meshes are intact before use. Immediately stop using the shaver if the shaving head or the blade meshes are damaged.

Travel Lock

This shaver is equipped with a travel lock to prevent it from accidentally being started while it is inside the luggage.

- Enabling the travel lock: When the shaver is stopped, press and hold the mode button for 3 seconds to enable the travel lock. Once it is enabled, the motor will not rotate, and the travel lock indicator will remain on for 3 seconds and then go off.
- Disabling the travel lock: Press and hold the mode button for 3 seconds to disable the travel lock. The travel lock indicator will blink and go off, and the shaver will start afterward.

Note: Once the travel lock is enabled, the shaver cannot be started if you press the start/stop button, and the travel lock indicator will blink. You can press the mode button to change the mode.



Charging

- **Charging dock:** Connect the charging cable to the power port of the charging dock and plug the cable into a power supply. Then place the shaver onto the charging dock.
- **Type-C charging port:** Connect the charging cable to the Type-C charging port on the back of the shaver and plug the cable into a power supply.

Note:

1. When the battery level is low, you can use the shaver during charging with the Type-C charging port. However, do not use the shaver during charging while you are bathing or in a humid environment.
2. Do not wash the charging dock with water, please wipe it clean with a wet cloth.

Battery Level While Using		Indicator Status
100%–40%		Remains white
40%–20%		Remains orange
20%–1%		Remains red
0%		Blinks red 3 times and goes off. The shaver doesn't start.

Battery Level While Charging		Indicator Status
0% –20%		Breathes red
20%–40%		Breathes orange
40%–99%		Breathes white
100%		Remains white



Note:

- If the shaver cannot be started due to a low battery, it takes about 120 minutes to fully charge the shaver.
- The shaver's battery can last about 60 minutes on a full charge.
- Please charge the shaver immediately when its battery is low. If the shaver will not be used for an extended period of time, fully charge it at least once every 6 months.

Cleaning & Maintenance

If the clean/error indicator blinks for 5 seconds and then goes off after starting the shaver, please clean it for an optimal effect. The clean/error indicator will automatically blink for 5 seconds once every 30 minutes of use to remind the user to regularly clean the stubble buildup.

1. Make sure the shaver is stopped and is not being charged before cleaning it.



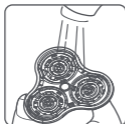
2. Rinse the shaver under a faucet with warm water.



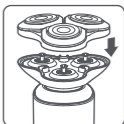
3. Remove the shaving head upwards from the indentation.



4. Rinse the holder of the shaving head with water or clean it with the cleaning brush.



5. Rinse the inside of the shaving head with warm water. Do not wipe it with a towel or paper towel.



6. Make sure the shaving head and the shaver are dry completely before reinstalling the shaving head.



Note: When cleaning, make sure to install the protective cover of the Type-C charging port, and do not rinse the charging port and the bottom of the shaver.

Note: To ensure the performance of the shaver, it is recommended to replace the shaving head every every six months. Please go to www.mi.com to purchase a replacement.

Environmental Protection

When the shaver reaches the end of its service life, please remove, dispose of, or recycle the built-in battery in accordance with local laws and regulations of the country or region it is used in. If the battery cannot be removed, please take the shaver to an officially designated recycling center. Or you can send the shaver to the seller's designated maintenance department which will disassemble and recycle the battery.

Warnings

1. Do not expose this shaver or its battery to fire to prevent the battery from exploding or releasing toxic and hazardous substances.
2. Do not short-circuit the battery to prevent it from combusting and causing fire.
3. Only disassemble the shaver when you want to dispose of it; otherwise, the shaver will be damaged. When removing the battery, make sure to follow the basic safety precautions and unplug the shaver before removing the battery.
4. Before removing the battery, make sure the battery is depleted. You can make the shaver work until it stops automatically to drain the battery.
5. The shaver cannot be restored once it is disassembled.



EU Declaration of Conformity

We, Shenzhen Soocas Technology Co., Ltd., hereby, declare that this equipment is in compliance with the applicable Directives and European Norms, and amendments. The full text of the EU declaration of conformity is available at the following internet address: <http://www.mi.com/global/service/support/declaration.html>



WEEE Disposal and Recycling Information

All products bearing this symbol are waste electrical and electronic equipment (WEEE as in directive 2012/19/EU) which should not be mixed with unsorted household waste. Instead, you should protect human health and the environment by handing over your waste equipment to a designated collection point for the recycling of waste electrical and electronic equipment, appointed by the government or local authorities. Correct disposal and recycling will help prevent potential negative consequences to the environment and human health. Please contact the installer or local authorities for more information about the location as well as terms and conditions of such collection points.

Specifications

Name: Xiaomi Electric Shaver S700	Charging Port: Type-C
Model: S700	Rated Input: 5 V --- 1 A
IP Rating: IPX7	Charging Time: Approx. 120 min



Power Adapter

Input: 100–240 V~ 50/60 Hz, 0.2 A	Output: 5.0 V --- 1.0 A 5.0 W
-----------------------------------	-------------------------------

Information Published	Value and Precision	Unit
Manufacturer's Name	Jiangxi Jian Aohai Technology Co., Ltd.	—
Model Identifier	A520-050100U-EU1	—
Input Voltage	100–240	V~
Input AC Frequency	50/60	Hz
Output Voltage	5.0	== V
Output Current	1.0	A
Output Power	5.0	W
Average Active Efficiency	73.77	%
Efficiency at Low Load (10%)	64.588	%
No-load Power Consumption	0.075	W

Troubleshooting

Issues		Possible Causes	Solutions
Poor-quality shaving		The shaving head is damaged or worn out.	Replace with a genuine shaving head.
		Shaving head is clogged up with stubbles.	Thoroughly clean the shaver.
		Low or depleted battery.	Charge immediately.
Irritated skin after shaving		It takes a certain period of time for your skin to adapt to the shaver.	Skin irritation will fade after 2–3 weeks of use.
		The shaving head is damaged or worn out.	Replace with a genuine shaving head.
The usage time is less than 60 minutes after being fully charged		The load on the motor is increased if the shaving head hasn't been cleaned for a long time.	Thoroughly clean the shaver.
		Shaver battery error.	Return the shaver to after-sales service for repair.
Clean/error indicator blinks for 5 seconds after starting the shaver		The shaver is not cleaned for a long time.	Thoroughly clean the shaver.
		The shaving head is not properly installed or stuck by a foreign object.	Reinstall the shaving head/remove the foreign object/contact the after-sales service.
		The battery is depleted.	Charge immediately.
The motor does not work after the start/stop button is pressed.	The indicator does not light up.	Circuit board is damaged.	Return the shaver to after-sales service for repair.
		Start/stop button does not function.	Return the shaver to after-sales service for repair.
	The battery level indicator blinks red.	The battery is depleted.	Charge immediately.
	The travel lock indicator blinks.	Travel lock is enabled.	Press and hold the button for 3 seconds to disable.
The shaver cannot be charged.	The battery level indicator does not light up.	The contact is poor.	Reconnect the shaver to a power supply.
		The shaver has internal damage.	Return the shaver to after-sales service for repair.
	The battery level indicator blinks red for 2 seconds and goes off for 8 seconds alternately.	Ambient temperature is too low/high to charge.	Charge in environments with a temperature between 5°C to 35°C.

Shaver makes a whistling sound when in operation.	Shaving head is worn out.	Replace it with a new original shaving head.
	Shaver is dirty.	Clean the shaver thoroughly.

Manufactured for: Xiaomi Communications Co., Ltd.

Manufactured by: Shenzhen Soocas Technology Co., Ltd.

(a Mi Ecosystem company)

Address: Room 1101, 1102, 1103, 1104, 401 & 402, Building 2, Chongwen Area, Nanshan iPark, No. 3370 Liuxian Avenue, Nanshan District, Shenzhen, China

For further information, please go to www.mi.com

User Manual Version: V1.0

Importer:

Beryko s.r.o.

Pod Vinicemi 931/2, 301 00 Plzeň

www.beryko.cz